

**BALDOR® • RELIANCE** 

**Product Information Packet**

**M1721T**

**1.5/.67HP, 1740/1165RPM, 3PH, 60HZ, 182T, 352**

Part Detail							
Revision:	N	Status:	PRD/A	Change #:		Proprietary:	No
Type:	AC	Elec. Spec:	35WGP586	CD Diagram:	CD0013	Mfg Plant:	
Mech. Spec:	35L100	Layout:	35LYL100	Poles:	04/06	Created Date:	05-01-2007
Base:	RG	Eff. Date:	03-20-2018	Leads:	6#18		

Specs			
Catalog Number:	M1721T	Insulation Class:	F
Enclosure:	TEFC	Inverter Code:	Not Inverter
Frame:	182T	KVA Code:	K
Frame Material:	Steel	Lifting Lugs:	No Lifting Lugs
Output @ Frequency:	1.500 HP @ 60 HZ	Locked Bearing Indicator:	No Locked Bearing
	.670 HP @ 60 HZ	Motor Lead Quantity/Wire Size:	6 @ 18 AWG
Synchronous Speed @ Frequency:	1200 RPM @ 60 HZ	Motor Lead Exit:	Ko Box
Voltage @ Frequency:	460.0 V @ 60 HZ	Motor Lead Termination:	Flying Leads
XP Class and Group:	None	Motor Type:	3528M
XP Division:	Not Applicable	Mounting Arrangement:	F1
Agency Approvals:	UR	Product Family:	General Purpose
	CSA	Pulley End Bearing Type:	Ball
Auxillary Box:	No Auxillary Box	Pulley Face Code:	Standard
Auxillary Box Lead Termination:	None	Pulley Shaft Indicator:	Standard
Base Indicator:	Rigid	Rodent Screen:	None
Bearing Grease Type:	Polyrex EM (-20F +300F)	Shaft Extension Location:	Pulley End
Blower:	None	Shaft Ground Indicator:	No Shaft Grounding
Current @ Voltage:	2.200 A @ 460.0 V	Shaft Rotation:	Reversible

<b>Design Code:</b>	-	<b>Shaft Slinger Indicator:</b>	No Slinger
<b>Drip Cover:</b>	No Drip Cover	<b>Speed Code:</b>	2S-2W-VT
<b>Duty Rating:</b>	CONT	<b>Motor Standards:</b>	NEMA
<b>Electrically Isolated Bearing:</b>	Not Electrically Isolated	<b>Starting Method:</b>	Direct on line
<b>Feedback Device:</b>	NO FEEDBACK	<b>Thermal Device - Bearing:</b>	None
<b>Front Face Code:</b>	Standard	<b>Thermal Device - Winding:</b>	None
<b>Front Shaft Indicator:</b>	None	<b>Vibration Sensor Indicator:</b>	No Vibration Sensor
<b>Heater Indicator:</b>	No Heater	<b>Winding Thermal 1:</b>	None
		<b>Winding Thermal 2:</b>	None

Nameplate NP1256L										
CAT.NO.	M1721T									
SPEC.	35L100P586									
HP	1.5/.67									
VOLTS	460									
AMP	2.2/1.36									
RPM	1740/1165									
FRAME	182T				HZ	60			PH	3
SER.F.	1.15		CODE	K	DES	-		CLASS	F	
NEMA-NOM-EFF			PF							
RATING	40C AMB-CONT									
CC									USABLE AT 208V	
DE	6206				ODE	6203				
ENCL	TEFC		SN							

Parts List		
Part Number	Description	Quantity
SA156939	SA 35L100P586	1.000 EA
RA145641	RA 35L100P586	1.000 EA
35FN3002A05SP	EXFN, PLASTIC, 6.376 OD, .638 ID	1.000 EA
NS2512A01	INSULATOR, CONDUIT BOX X	1.000 EA
35CB3009	35 CB W/1.09 DIA. LEAD HOLE @ 6:	1.000 EA
36GS1000SP	GASKET-CONDUIT BOX, .06 THICK #SV-330 LE	1.000 EA
51XB1016A07	10-16 X 7/16 HXWSSLD SERTYB	2.000 EA
11XW1032G06	10-32 X .38, TAPTITE II, HEX WSHR SLTD U	1.000 EA
35EP3122A00	MASTER ODE,203 BRG,.683SH,#26 DRN,GRSR,F	1.000 EA
HW4500A01	1641B(ALEMITE)400 UNIV, GREASE FITT	1.000 EA
HW5100A03	WAVY WASHER (W1543-017)	1.000 EA
35EP3113A01	PU ENDPLATE, MACH W/206 BRG	1.000 EA
HW4500A01	1641B(ALEMITE)400 UNIV, GREASE FITT	1.000 EA
XY1032A02	10-32 HEX NUT DIRECTIONAL SERRATION	4.000 EA
35FH4005A84SP	IEC FH W/GRSR, NO DIMPLES PRIMED	1.000 EA
51XW1032A06	10-32 X .38, TAPTITE II, HEX WSHR SLTD S	3.000 EA
35CB4521GX	CONDUIT BOX LID KIT **ORDER INDIV PARTS	1.000 EA
51XW0832A07	8-32 X .44, TAPTITE II, HEX WSHR SLTD SE	4.000 EA
HW2501E16	KEY, 1/4 SQ X 1.750	1.000 EA
HA7000A02	KEY RETAINER RING, 1 1/8 DIA, 1 3/8 DIA	1.000 EA
85XU0407S04	4X1/4 U DRIVE PIN STAINLESS	2.000 EA
MJ1000A02	GREASE, MOBIL POLYREX EM - 124047	0.050 LB
51XB1214A16	12-14X1.00 HXWSSLD SERTYB	1.000 EA
MG1000G27	MED CHARCOAL METALLIC GREY 400-0096	0.017 GA

<b>Parts List (continued)</b>		
<b>Part Number</b>	<b>Description</b>	<b>Quantity</b>
HA3100A20	THRUBOLT 10-32 X 9.812	4.000 EA
LB1119N	WARNING LABEL	1.000 EA
LC0013	CONNECTION LABEL	1.000 EA
NP1256L	ALUM UL CSA CC INDUSTRIAL MOTOR A60	1.000 EA
36PA1000	PKG GRP, PRINT PK1016A06	1.000 EA
MN416A01	TAG-INSTAL-MAINT no wire (1200/bx) 3/19	1.000 EA
FE-0000001	ZRTG FE ASSEMBLY	1.000 EA

<b>Accessories</b>		
<b>Part Number</b>	<b>Description</b>	<b>Multiplier</b>
36-3301	C FACE KIT	A8
36EP1304A62SP	FLANGE MTD ENDPLATE 182-4TD -ENCL (LESS	A8

**AC Induction Motor Performance Data**

Record # 27561 - Typical performance - not guaranteed values

<b>Winding:</b> 35WGP586-R001	<b>Type:</b> 3528M	<b>Enclosure:</b> TEFC
-------------------------------	--------------------	------------------------

Nameplate Data				460 V, 60 Hz: High Speed Connection	
Rated Output (HP)	1.5/.67			Full Load Torque	4.52 LB-FT
Volts	460			Start Configuration	direct on line
Full Load Amps	2.20/1.36			Breakdown Torque	16.2 LB-FT
R.P.M.	1740/1165			Pull-up Torque	7.46 LB-FT
Hz	60	Phase	3	Locked-rotor Torque	10.6 LB-FT
NEMA Design Code	-	KVA Code	K	Starting Current	16 A
Service Factor (S.F.)	1.15			No-load Current	1.35 A
NEMA Nom. Eff.	0	Power Factor	0	Line-line Res. @ 25°C	16.1 Ω
Rating - Duty	40C AMB-CONT			Temp. Rise @ Rated Load	68°C
S.F. Amps				Temp. Rise @ S.F. Load	85°C

Load Characteristics 460 V, 60 Hz, 1.5 HP

% of Rated Load	25	50	75	100	125	150	S.F.
Power Factor	37	57	70	79	85	88	83
Efficiency	66.8	77.3	80.1	80.3	79.2	77	79.6
Speed	1786	1772	1758	1741	1722	1700	1730
Line amperes	1.41	1.59	1.84	2.2	2.61	3.11	2.45

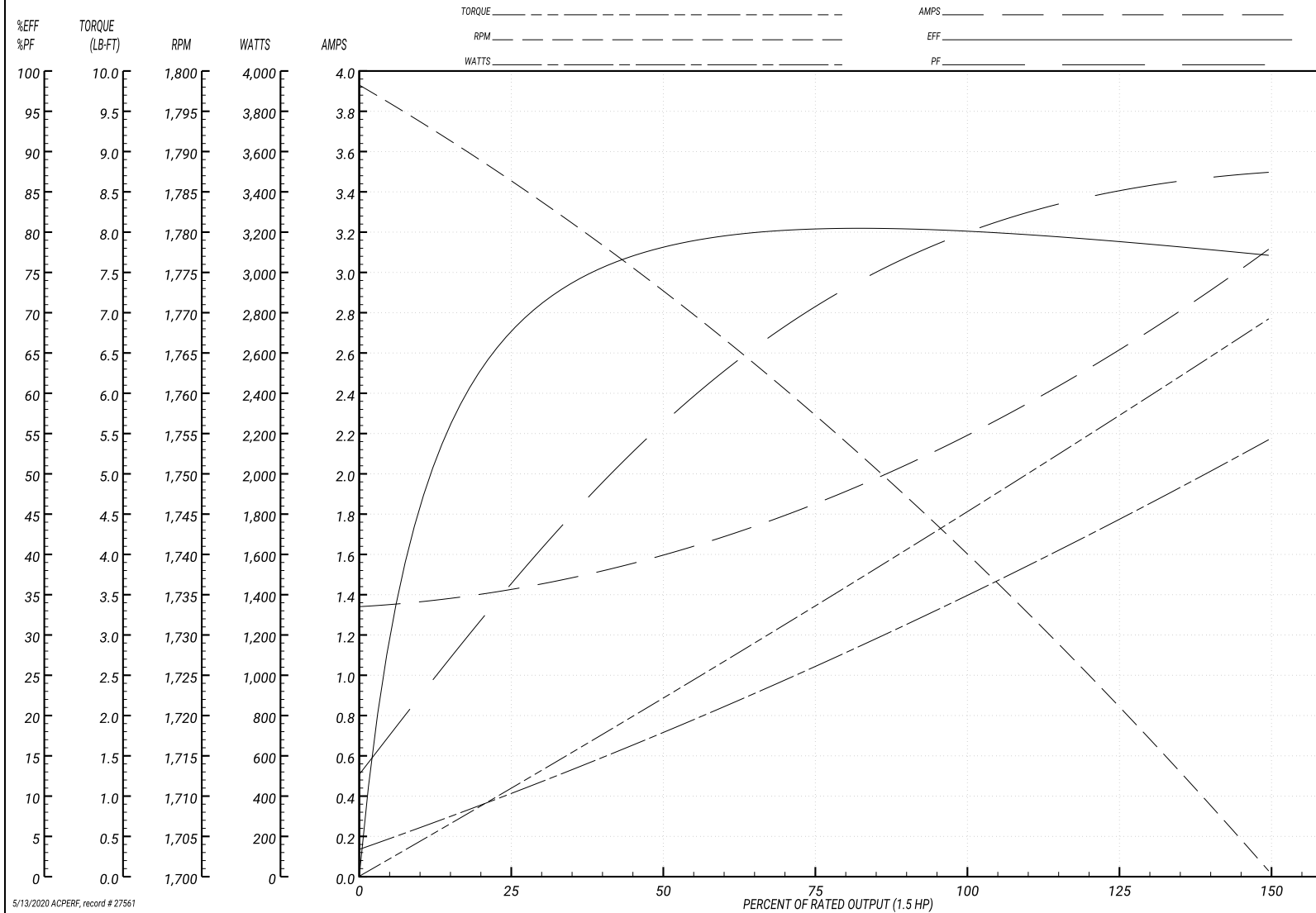
Performance Graph at 460V, 60Hz, 1.5HP Typical performance - Not guaranteed values

ABB Motors and Mechanical Inc.

WINDING # 35WGP586

Typical performance - not guaranteed values.

1.5 HP 3 PH 60 HZ 1741 RPM 460 V 3528M  
 TORQUES(LB-FT): PO=16.2 PU=7.46 LR=10.6 LRA=16



5/13/2020 ACPERF, record # 27561

**AC Induction Motor Performance Data**

Record # 27562 - Typical performance - not guaranteed values

<b>Winding:</b> 35WGP586-R001	<b>Type:</b> 3528M	<b>Enclosure:</b> TEFC
-------------------------------	--------------------	------------------------

Nameplate Data				460 V, 60 Hz: Low Speed Connection	
Rated Output (HP)	1.5/.67			Full Load Torque	2.99 LB-FT
Volts	460			Start Configuration	direct on line
Full Load Amps	2.20/1.36			Breakdown Torque	10.1 LB-FT
R.P.M.	1740/1165			Pull-up Torque	4.56 LB-FT
Hz	60	Phase	3	Locked-rotor Torque	6.09 LB-FT
NEMA Design Code	-	KVA Code	K	Starting Current	7.02 A
Service Factor (S.F.)	1.15			No-load Current	1.11 A
NEMA Nom. Eff.	0	Power Factor	0	Line-line Res. @ 25°C	42.4 Ω
Rating - Duty	40C AMB-CONT			Temp. Rise @ Rated Load	64°C
S.F. Amps				Temp. Rise @ S.F. Load	76°C

Load Characteristics 460 V, 60 Hz, 0.67 HP

% of Rated Load	25	50	75	100	125	150	S.F.
Power Factor	29	43	55	65	73	79	70
Efficiency	45.9	62	68.1	70.7	71.2	70.2	71
Speed	1192	1183	1175	1165	1152	1139	1157
Line amperes	1.12	1.17	1.24	1.36	1.51	1.69	1.45

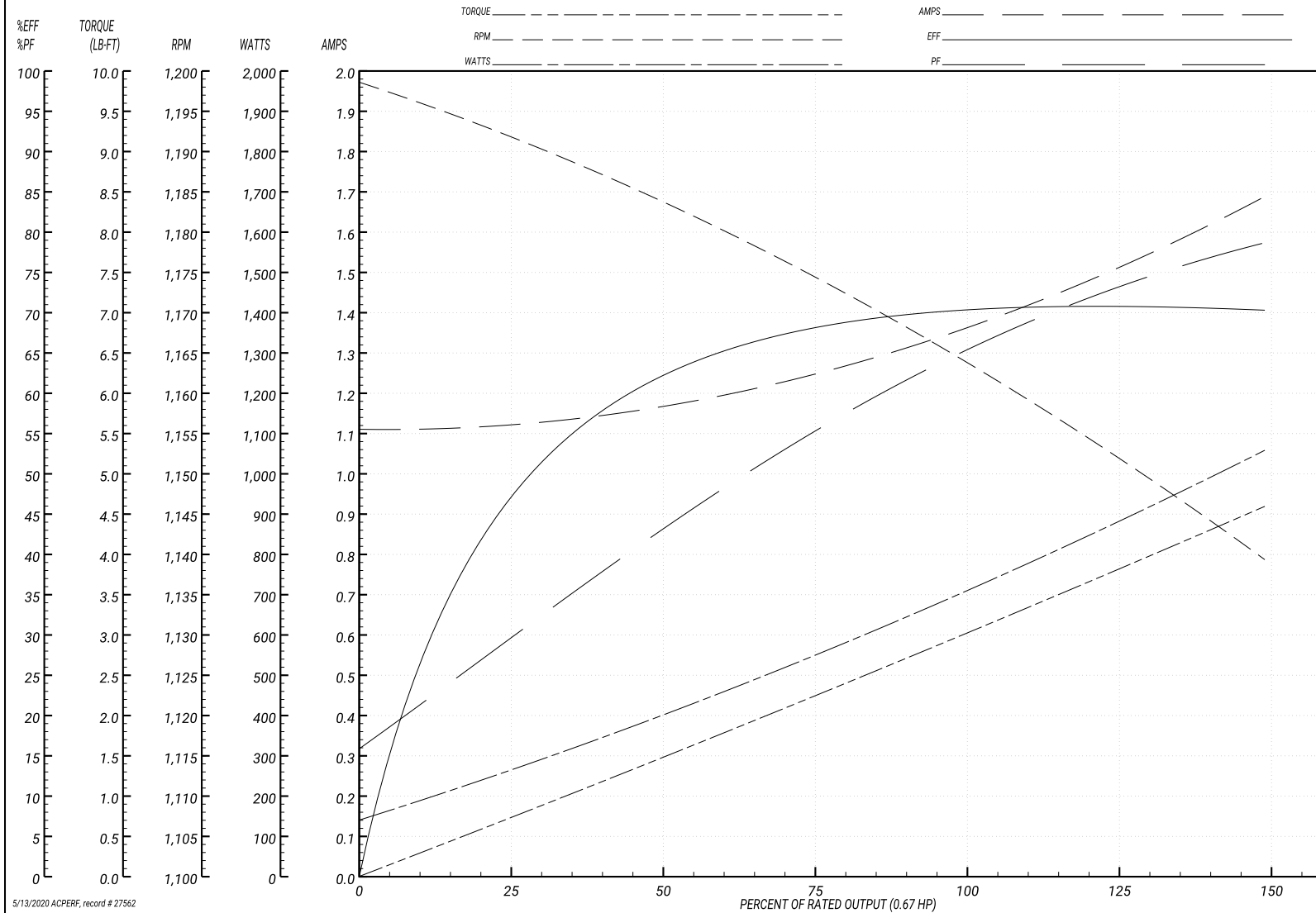
Performance Graph at 460V, 60Hz, 0.67HP Typical performance - Not guaranteed values

ABB Motors and Mechanical Inc.

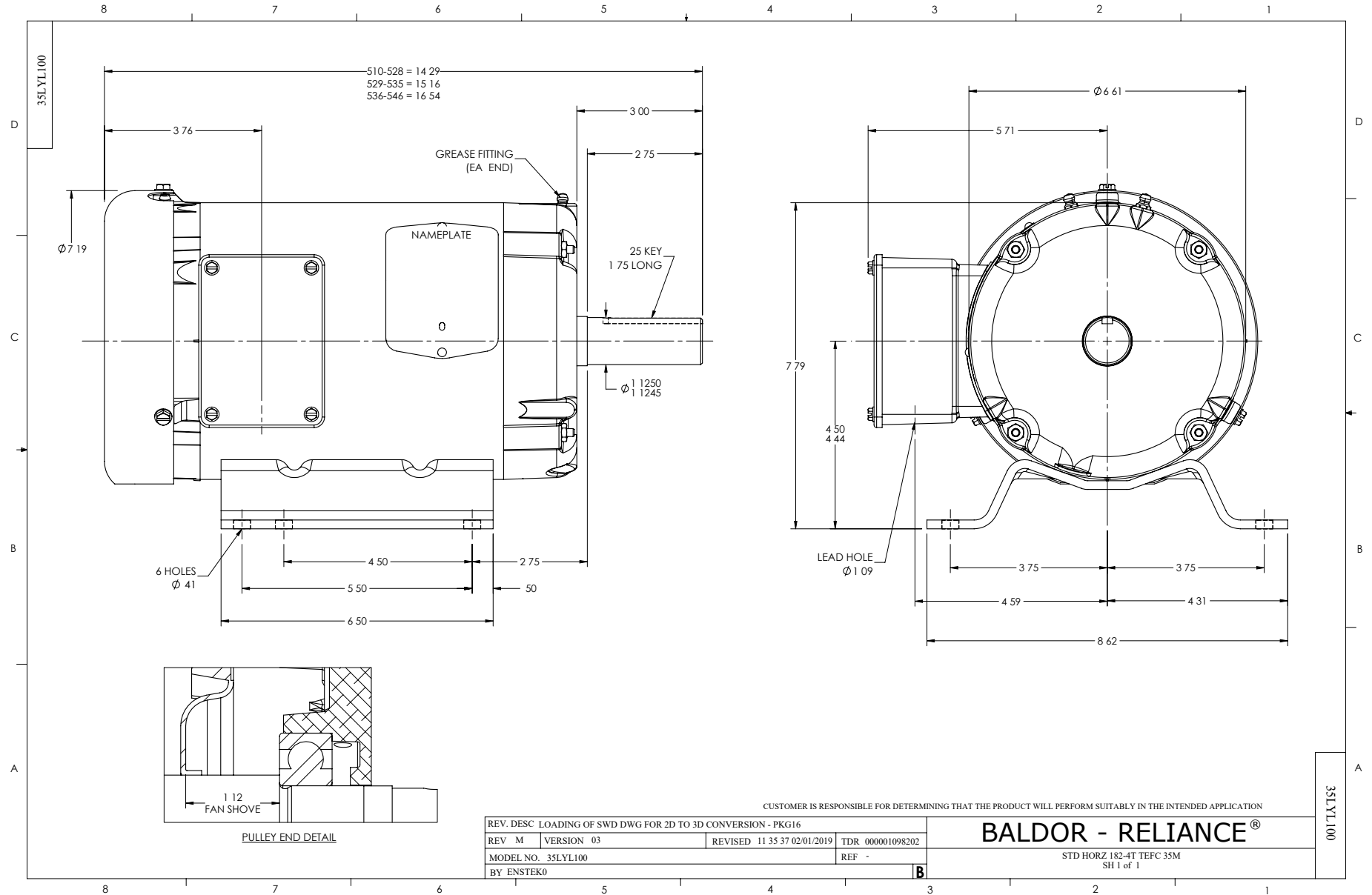
WINDING # 35WGP586

Typical performance - not guaranteed values.

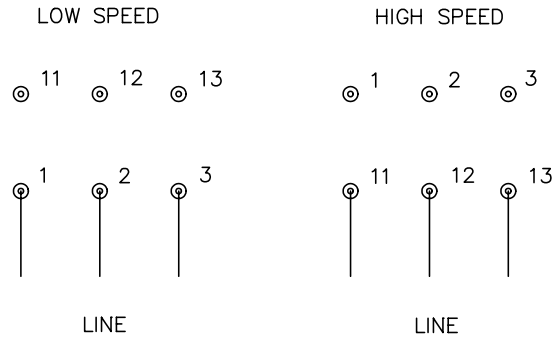
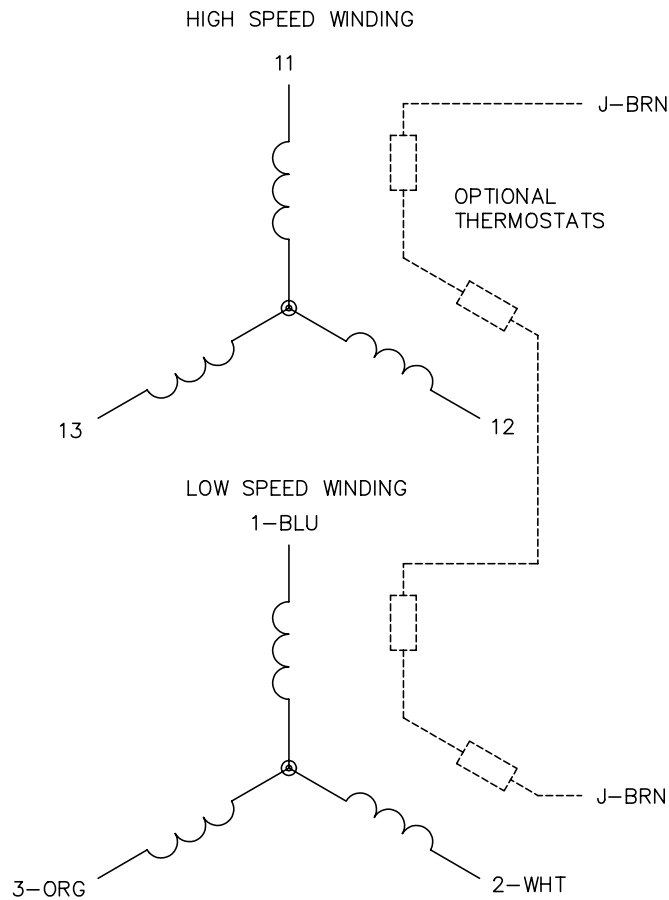
0.67 HP 3 PH 60 HZ 1165 RPM 460 V 3528M  
 TORQUES(LB-FT): PO=10.1 PU=4.56 LR=6.09 LRA=7.02



5/13/2020 ACPERF, record # 27562



CD0013



NOTES:

1. INTERCHANGE ANY TWO LINE LEADS TO REVERSE ROTATION.
2. OPTIONAL THERMOSTATS ARE PROVIDED WHEN SPECIFIED.
3. ACTUAL NUMBER OF INTERNAL PARALLEL CIRCUITS MAY VARY.
4. LEAD COLORS ARE OPTIONAL. LEADS MUST ALWAYS BE NUMBERED AS SHOWN.

REV. DESC: REVISE TO SHOW OPTIONAL COLORS			
REV. LTR: D	BY: JLP	REVISED: 01/22/99 8:50	TDR: 0171435
Ω10003		FILE: AAA00005143	MDL: -
		MTL: -	

**BALDOR ELECTRIC Co.**

3PH, SV, 6 LEADS, 2-SPEED 2-WINDING

CD0013